



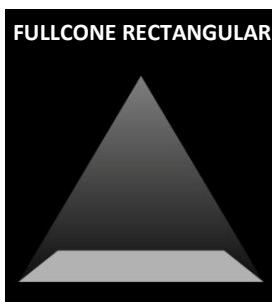
RECTANGULAR NOZZLE RE

The rectangular nozzle RE is used for cooling in continuous casting systems and is foreseen exclusively for steel production customers. The rectangular spray pattern covers the strand over the entire surface during the cooling phase. Therefore, a regular cooling can be ensured, which prevents uneven stresses within the structure. Through specific use of water, the process can be made more resource saving.

The inner contour was designed to ensure the widest possible cross section. This minimizes the risk of clogging by large particles and allows the use of process water. The RE nozzle was developed in cooperation with SMS Concast AG in Zurich. The distribution is only possible via Concast. The rectangular nozzle consists of the following 2 components, which are ordered separately (rectangular nozzle and cap nut).

SPRAY PATTERN

The first mentioned angle refers to the longitudinal angle of the nozzle, the second one is the transversal angle. The positioning pin is aligned parallel to the longitudinal angle of the nozzle.

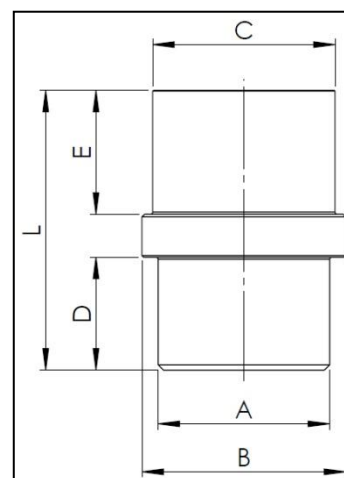


NOZZLE AVAILABLE IN THE FOLLOWING MATERIALS

Non-ferrous metal
brass (CuZn39Pb3)

Positioning pin
1.4305 (X8CrNiS 18-9)

DIMENSIONS						
Type	∅ A mm	∅ B mm	∅ C mm	D mm	E mm	L mm
RE 01	20	25	20	11	15	34
RE 02	32	38	34	21	23	52
RE 03	42	50	45	21	23	52





RECTANGULAR NOZZLE RE

CAPACITY CHART OF RECTANGULAR NOZZLE RE

type	capacity (l/min) 2.8 bar (test pressure)	spray angle longitudinal L	spray angle transversal T
RE 01	4.0 – 10.0	64° – 80°	17° – 45°
RE 02	6.0 – 45.0	60° – 90°	13° – 56°
RE 03	45.0 – 60.0	80° – 85°	23° – 41°

other capacities and angles on request

FOR ORDERING WE NEED FOLLOWING INFORMATION

Nozzle specification

nozzle type

desired longitudinal and transversal angle

desired capacity (l/min)

operating pressure (bar)

Jato-Düsenbau AG

Täschmattstrasse 23, CH-6015 Luzern, Schweiz, Tel: +41 41 269 88 30 Fax: +41 41 269 88 31 www.jato.ch info@jato.ch

VER.09/20